

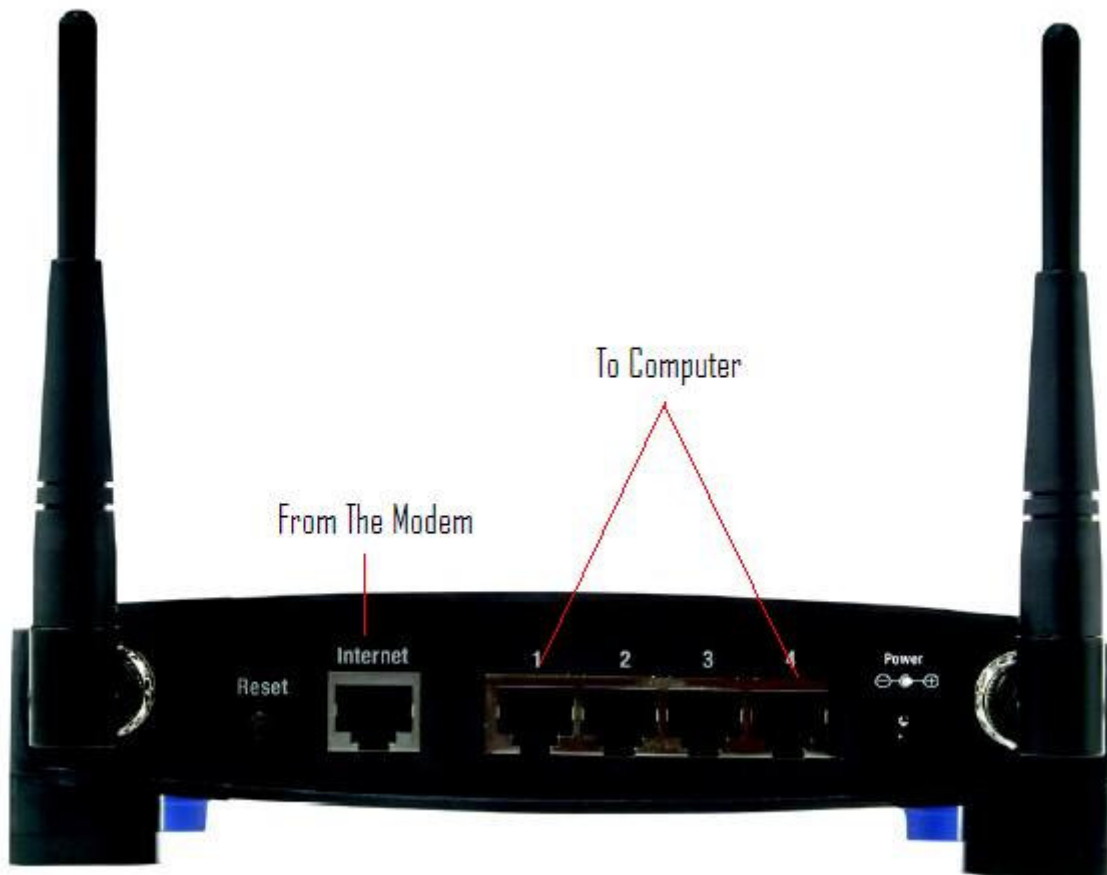
Installing A Wireless Router.

All routers come preconfigured to work with a DHCP network like Eagle Cable Internet, so you will not need the CD that comes with your router.

Hooking up the wires:

First run a network cable from the modem into the internet port on the back of the router. Then connect the power cable. Finally, run an additional network cable from any one of the ports labeled 1-4 to the computer(s).

(If the router has been used with a different internet provider, it is a good idea to reset the router. Do this by holding down the reset button for a few seconds.)

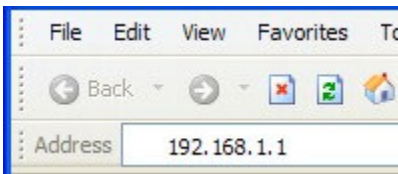


Any computers that are connected directly to the router should connect automatically after a restart.

Adding Optional Wireless Password

You can add a password encryption to your wireless network to prevent any of your neighbors from connecting to your wireless network. This is especially important in multi-family complexes. The computer can also be configured to remember the password so you do not have to enter it each time.

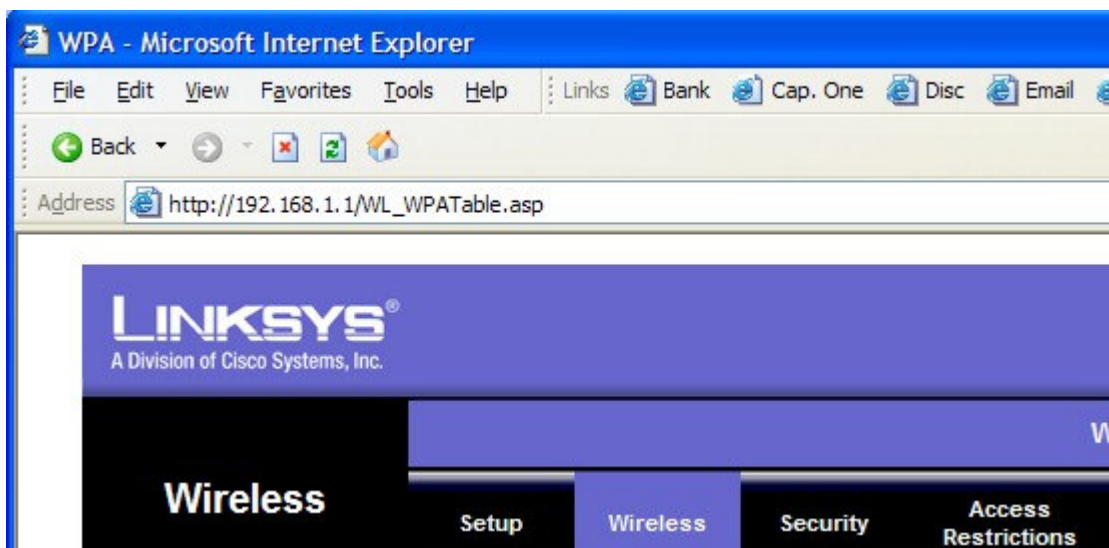
To add the password we will need to access the interface of the router. On a computer that is connected directly to the router, open Internet Explorer. (If you do not have a computer that is plugged directly into the router, complete the next section on Connecting a Computer with Win XP Wirelessly first then come back and add the password.) In the address bar of Internet Explorer type 192.168.1.1, then hit enter.



You will be prompted for a password.
The username field should be left blank.
Type admin in the password field.
Then click ok



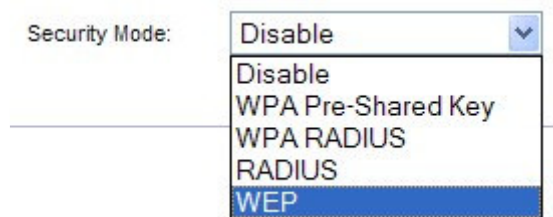
Now you are in the interface of the router click on the Wireless link toward the top.



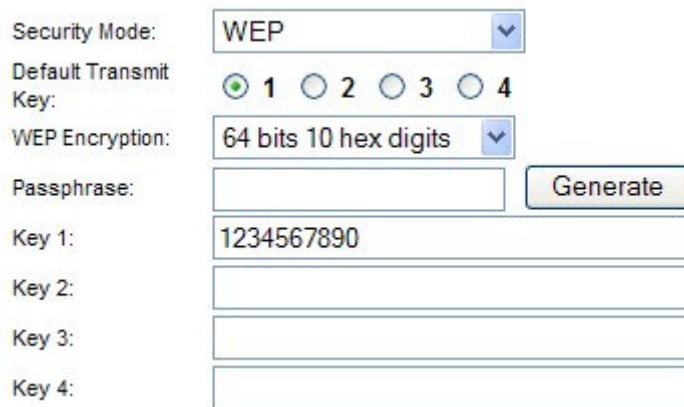
Then right below that click on Wireless Security



Change the Security Mode to WEP

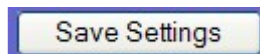


Leave the Key on 1 and leave the WEP Encryption at 64 bit 10 HEX digits
Make up a 10 digit password and type it in Key 1
The password is in Hex format which means it can only be numbers 0-9 and letters a-f.



You can also use 128 bits 26 hex digits
Some reviews have said that 128 bits Hex is a better Encryption to use, however I have found that the Macintosh laptops from Hays High seem to have fewer problems when 64 bits encryption is used.

Then click on Save Settings button at the bottom.



You are now password protected

To close out of the Linksys Interface simply click the X in the top right corner.

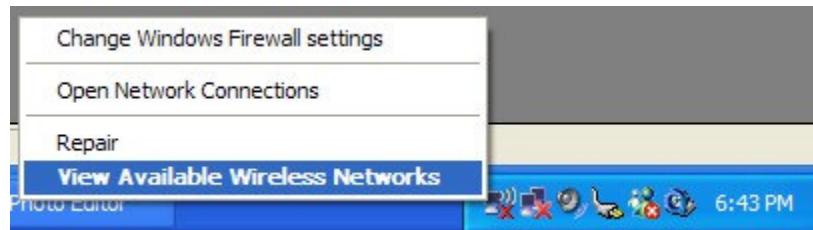
If you are adding this password through a computer connected wirelessly, then you will now have to repeat the section on Connecting a Computer with Win XP Wirelessly.
This time it will ask you for the password.

Connecting a Computer with Win XP Wirelessly

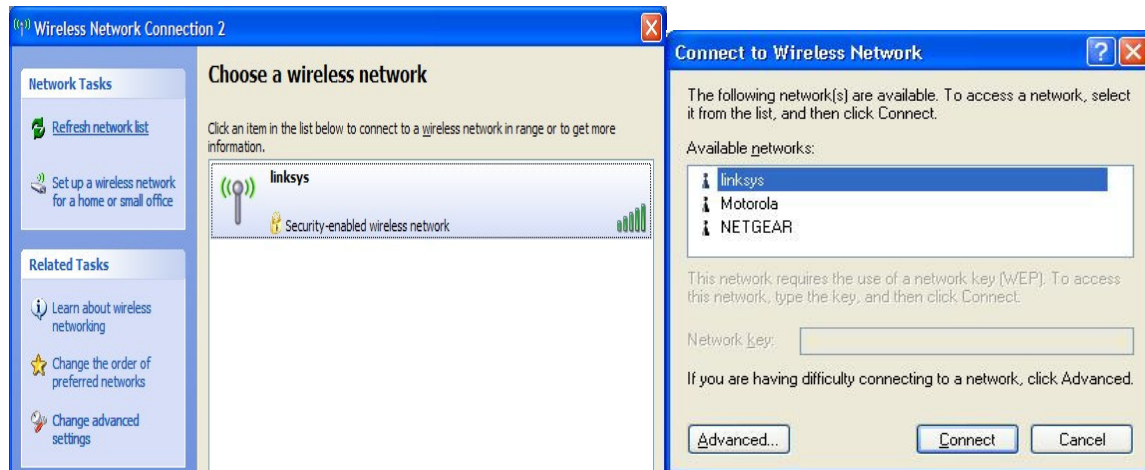
In the bottom right corner of your computer screen you will have a wireless icon the picture below is for Win XP SP2 (If you are running the original version of Win XP your icon will appear slightly different, but you can point your mouse over each icon and they will give you a description.)



Right click on the wireless icon and click on view available wireless networks.



Highlight the linksys and click connect in the bottom right.



If Password Encryption is enabled you will be prompted to enter the password.



If encryption is not enabled than it will simply connect.
Open Internet Explorer you should now be connected.